

C.CRANE

CC Witness+

Firmware 1.2 (June 2013)

The new firmware version 1.2 addresses:

1. Corrects reception issue when reverse preset tuning on AM.
2. Device name corrected when recognized on computer.

Firmware update is ONLY compatible with CC Witness Plus model.

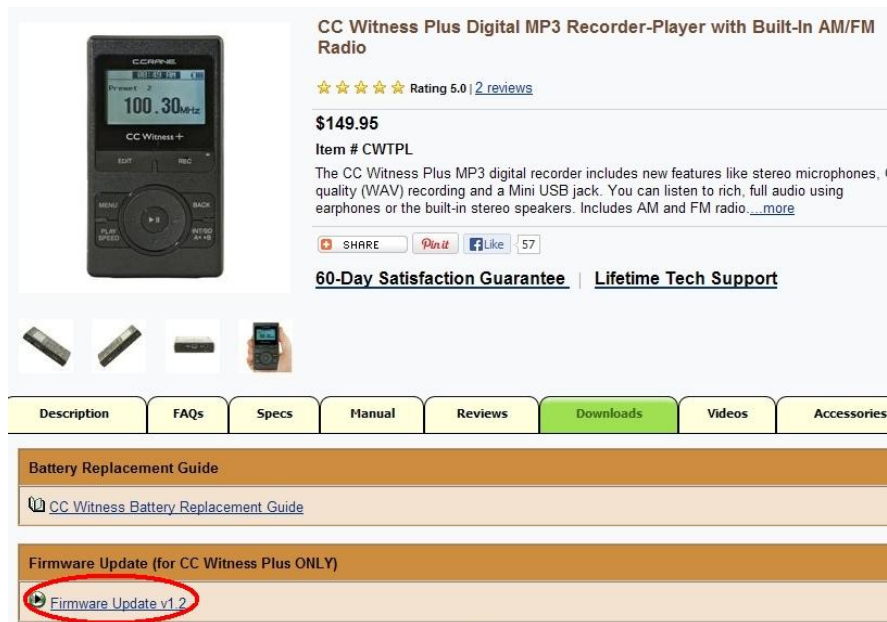
CC Witness Plus Firmware 1.2 Installation Guide:

WARNING: THE INTERNAL MEMORY OF THE CC WITNESS PLUS WILL BE AUTOMATICALLY ERASED WHEN THE FIRMWARE UPGRADE IS COMPLETE. IF THERE ARE FILES THAT YOU WANT TO KEEP PLEASE COPY THEM TO YOUR COMPUTER OR AN SD CARD BEFORE UPGRADING.

Remove the optional SD card from the CC Witness Plus before upgrading your firmware, otherwise it will be erased.

Although this guide displays screens from a Windows® XP PC, other Windows versions and Mac users can follow the guide and upgrade in a similar fashion.

1. Download the new firmware for the CC Witness Plus by clicking “Firmware Update v1.2” from the CCrane website.



CC Witness Plus Digital MP3 Recorder-Player with Built-In AM/FM Radio

★★★★★ Rating 5.0 | 2 reviews

\$149.95

Item # CWTPL

The CC Witness Plus MP3 digital recorder includes new features like stereo microphones, (quality (WAV) recording and a Mini USB jack. You can listen to rich, full audio using earphones or the built-in stereo speakers. Includes AM and FM radio. [...more](#)

SHARE | [Pin it](#) | [Like](#) | 57

[60-Day Satisfaction Guarantee](#) | [Lifetime Tech Support](#)

[Description](#) | [FAQs](#) | [Specs](#) | [Manual](#) | [Reviews](#) | [Downloads](#) | [Videos](#) | [Accessories](#)

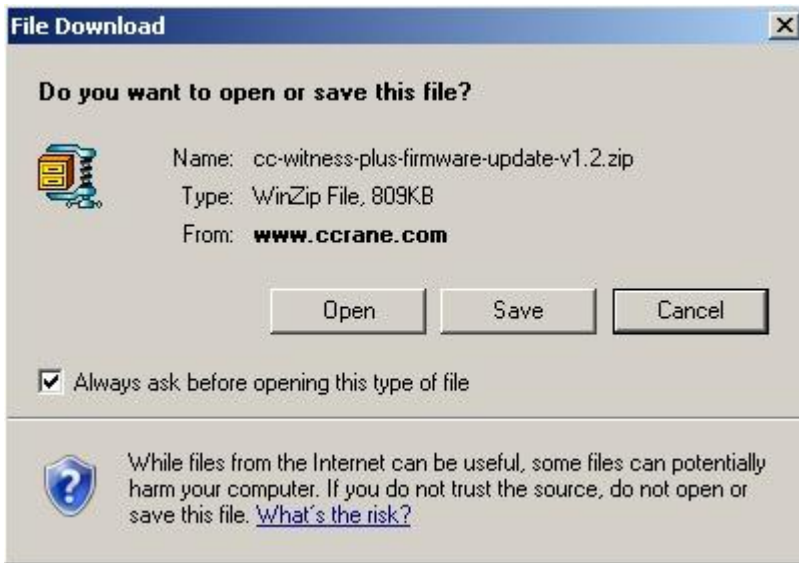
[Battery Replacement Guide](#)

[CC Witness Battery Replacement Guide](#)

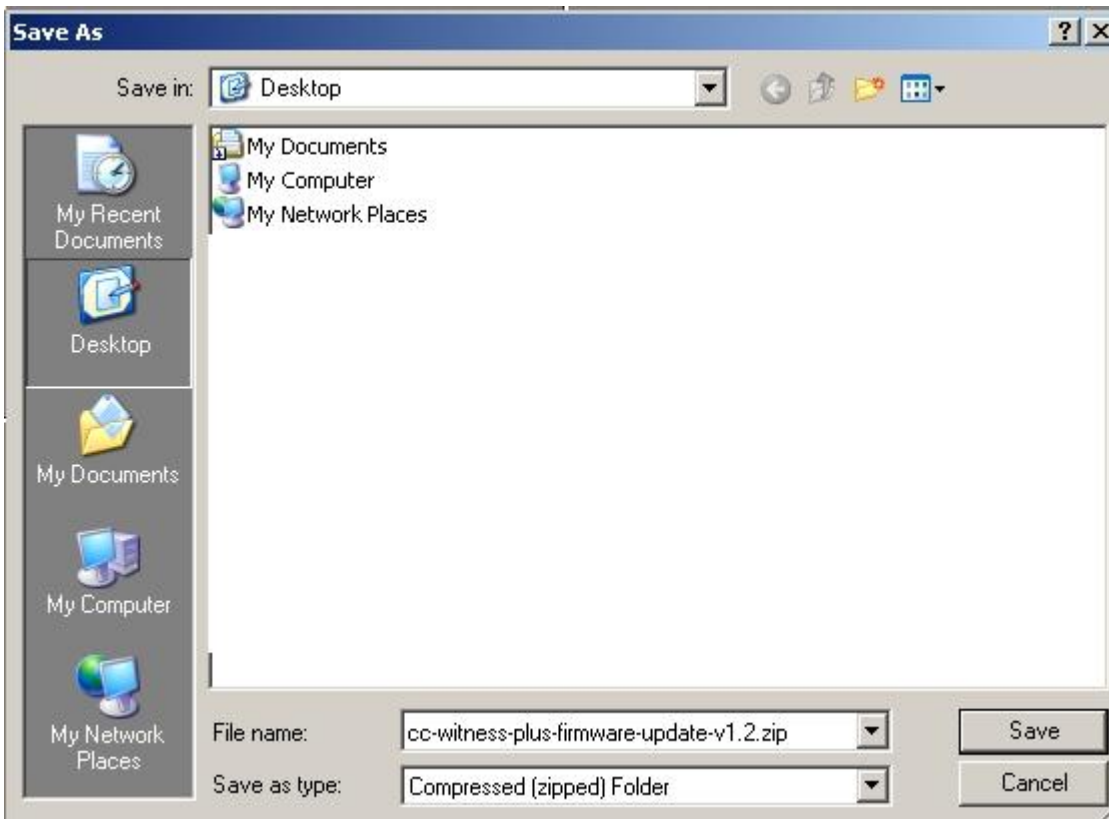
[Firmware Update \(for CC Witness Plus ONLY\)](#)

[Firmware Update v1.2](#)

2. Click "Save File".



3. Save to "Desktop".



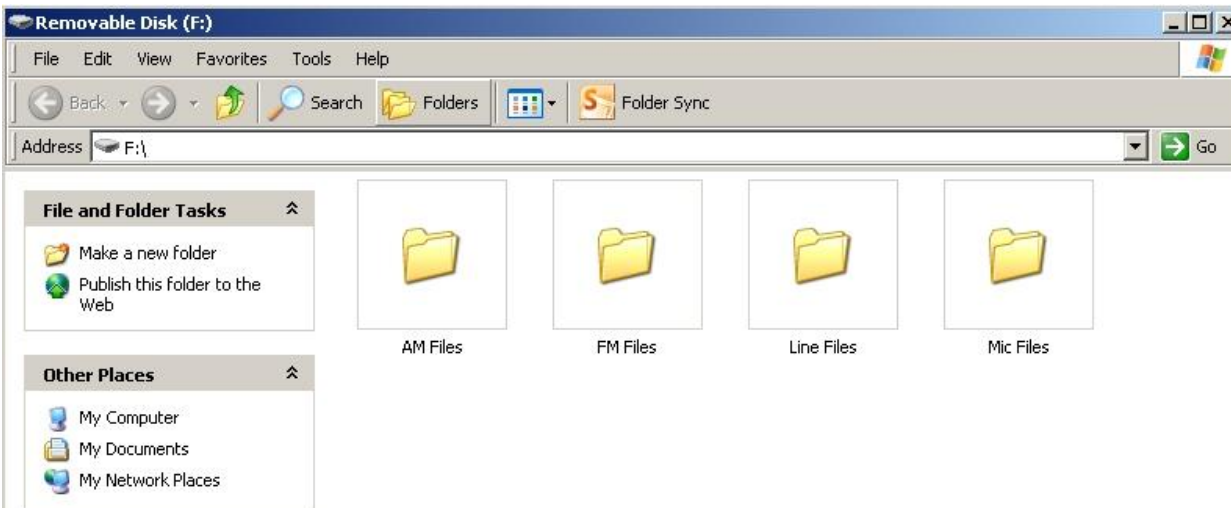
- When download is finished, you will notice a new icon on your computer desktop. Double click on the new icon.



- Right click on the file that starts with "FWUP..." and select "Copy".
Note: Do not close this window because you will need to use it again later.

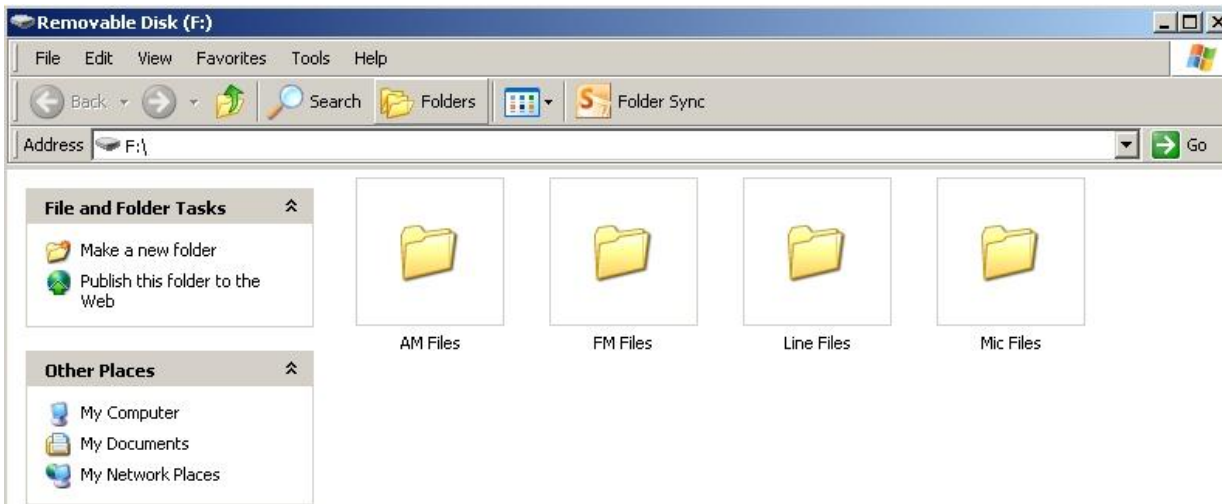


- Plug the CC Witness Plus in to your computer.
- Open the internal memory of the CC Witness Plus.



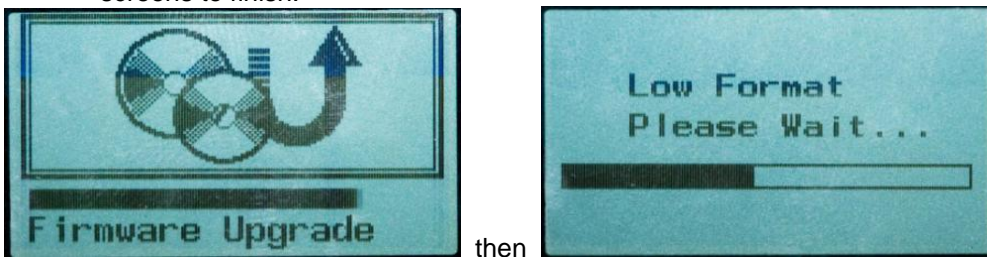
Note: You will be prompted to open the internal memory upon plugging in the CC Witness Plus. The Internal memory of the CC Witness Plus will also be represented by a drive letter when "My Computer" is opened.

8. Click “Edit” and select “Paste” to copy the “FWUP...” file into the CC Witness Plus.



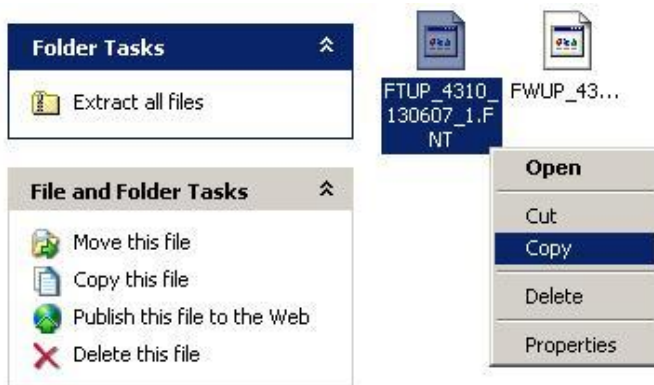
9. Once the “FWUP...” file is copied to the CC Witness Plus, remove the USB cable from the Computer (see user manual page 25 for proper USB cable removal instructions).

10. When detached from the computer the CC Witness Plus will begin to upgrade the firmware. Wait for both loading screens to finish.

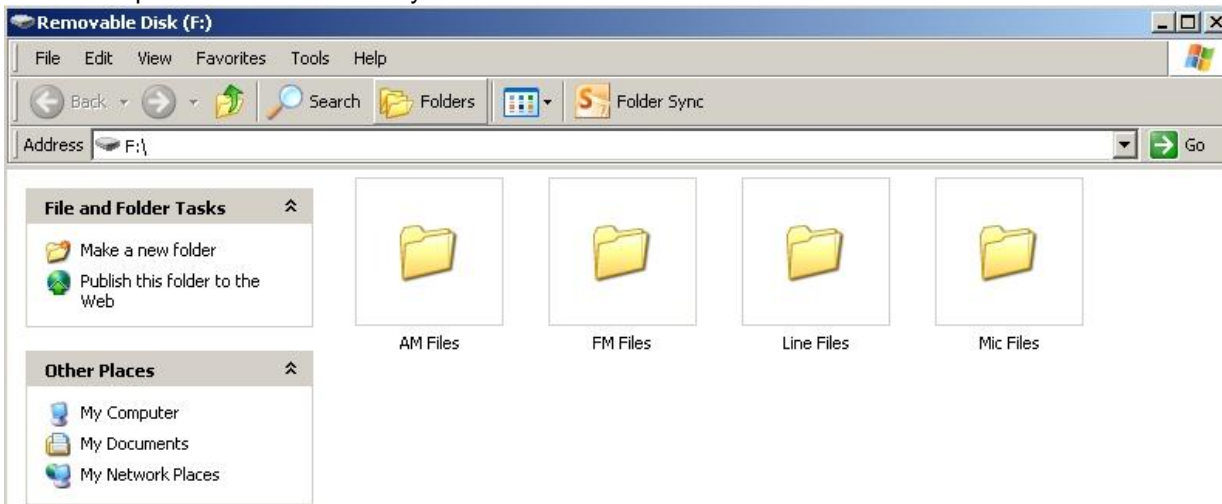


11. Plug the CC Witness Plus in to your computer.

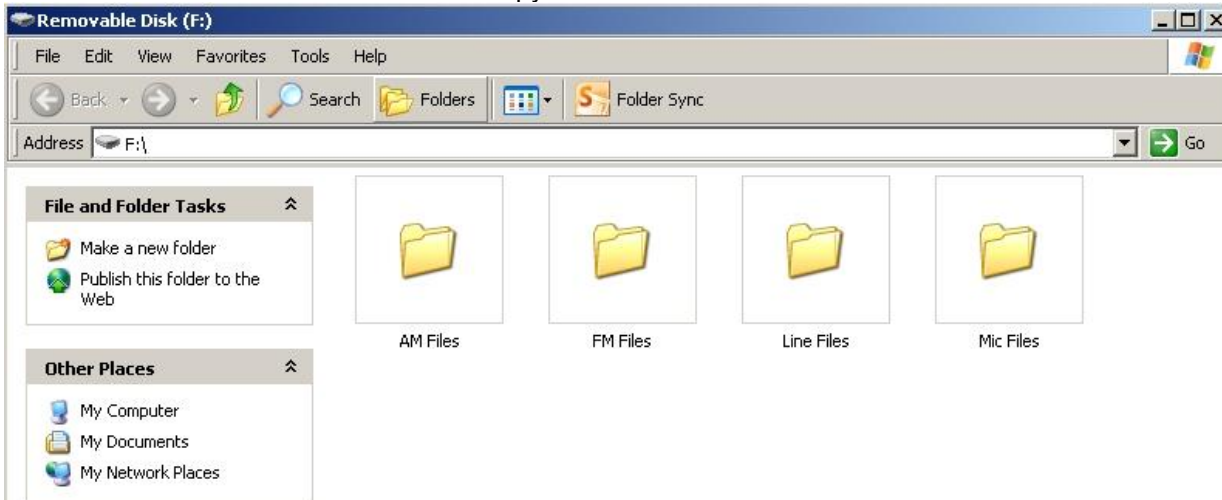
Bring up the window titled “cc-witness-plus-firmware-update-v1.2”. Right click on the file that starts with “FTUP...” and select “Copy”



12. Open the internal memory of the CC Witness Plus.

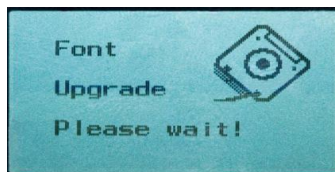


13. Click “Edit” and select “Paste” to copy the “FTUP...” file into the CC Witness Plus.



14. Once the “FTUP...” file is copied to the CC Witness Plus, remove the USB cable from the Computer.

15. When detached from the computer the CC Witness Plus will begin to upgrade the firmware. Wait for the loading screens to finish.



When finished the CC Witness Plus will power up on its own and be ready to use. Notice that the start screen now shows “Version 1.2”.

You can now copy your files back to the CC Witness Plus and insert your optional SD if you were using one.

Please let us know what you think about the new firmware or any other comments by emailing customerservice@ccrane.com.