

應用程式說明

802.11g USB Utility

- 1. 本產品附贈無線網卡之應用程式，可於本網卡接上電腦時執行多種無線網路相關監控、管理程式，執行方式如下兩種：
 - 1) 雙滑鼠點選兩次，桌面的小圖示
 - 2) 開始 / 程式集 / 802.11g USB wireless LAN / 802.11g USB / RAConfig2500.exe

Once the driver installed, the 802.11g USB WLAN Utility is ready to provide further management functions of wireless network. How to execute:

- 1) Double-click the Wireless Application icon showed on desktop.
- 2) Start / Programs / 802.11g USB wireless LAN / 802.11g USB / RAConfig2500.exe

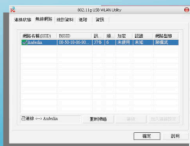
- 2. 出現 802.11g USB Utility 應用程式主畫面，點選菜單“連線狀態”，可以瀏覽網路連線狀態及相關資料。

Choose "Status" tab to browse wireless networking status and information.



- 3. 點選菜單“無線網路”，可以瀏覽無線主機（基地台）的狀態。

Choose "Wireless AP" to browse the status of access point.



- 4. 點選菜單“統計資料”，進而了解資料傳輸之相關數據統計。

Choose "Statistic" to require more information of data transferring.



詳細規格

Specification

| | |
|-----------------|---|
| Model No. | TG-USB-OMNI |
| Standard | IEEE 802.11b / IEEE 802.11g |
| Signal Type | DSSS (Direct Sequence Spread Spectrum) / OFDM |
| Modulation | BPSK / QPSK / CCK / QAM |
| Host Interface | MINI USB 1.1/2.0 |
| Antenna | 4.5dBi Omni-directional antenna |
| Data Encryption | 64 / 128 bit WEP / WPA |
| Frequency band | 2.4 GHz ~ 2.4835 GHz |
| Channel | 11 Channels (US, Canada) 13 Channels (Europe) 14 Channels (Japan) |

| | |
|-----------------------|--|
| Model No. | TG-USB-OMNI |
| Data Rate | Up to 54Mbps (with Automatic Scale Back) |
| Transmit Power Output | 11b: 20 dBm, 11g: 17dBm (Typical) |
| Receive Sensitivity | 11b: -85 dBm@11Mbps, 11g: -72 dBm@54Mbps (Typical) |
| Range | 11b: 2km, 11g: 1km (Line-of-sight) |
| Compatibility | Windows 2000/XP |
| LED Indicators | Power, Link Status |
| USB Power | 5V DC, 450mA Tx, 370mA Rx, 30mA Power-saving Mode |
| Temperature | Operating: 0°C to 55°C Storage: -20°C to 70°C |
| Humidity | 95% Non-Condensing |
| Certification | FCC, CE |
| USB Cable | 4M & 1M |



USB2.0 強效 / 遠距無線網卡

Installation Guide: *USB2.0 High Power Wireless LAN Card*

產品說明書

Quick Installation Guide

- 產品主要功能 Main Features
- 應用程式說明 802.11g USB Utility
- 安裝說明 Installation Guide
- 詳細規格 Specification

產品型號: TG-USB-OMNI
Model No.: TG-USB-OMNI

產品主要功能

Main Features

最遠傳輸距離可至兩公里 (無障礙之可視距離), 有效改善 5-10倍距離
最高傳輸速率 54Mbps, 相當WiFi IEEE 802.11b/g
採用USB資料傳輸及供電, 使用方便

- Up to 2 KM long range wireless application
- Up to 54Mbps data rate
- Compatible with IEEE802.11b/g
- USB2.0 /1.1 interface & bus power

內建加強型功率傳輸模組, 收訊更輕鬆

內建高增益全向性天線, 收訊更靈活

多用途附件, 附贈窗型固定底座、

LCD螢幕固定夾

- Efficiently improve transmission quality - built in higher RF power & high gain antenna
- Multi-functional mounting sets : window & LCD mount
- Typical 5-10 times distance compared with ordinary client devices

安裝說明

USB2.0 強效 / 遠距無線網卡

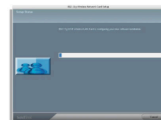
1. 插入安裝光碟片, 自動出現安裝程式頁面, 選擇 "DRIVER" 執行安裝程式
Insert the Product CD-ROM, the menu appears automatically.
Click "DRIVER" to install.



2. 出現安裝程式主畫面, 滑鼠點選 "NEXT", 執行下一步安裝程序
Click "Next" button to start the process.



3. 安裝程式執行, 須時數分鐘
Takes few minutes during the installation.



4. 安裝完畢, 用滑鼠按下 "Finish" 鍵, 並將本網卡插入電腦 USB port

When it's done, click "Finish" button and then connect the USB2.0 Wireless LAN Card to a USB port on your computer.



5. 電腦自動偵測無線網卡, 並於桌面出現網卡應用程式圖案
The computer desktop shows Wireless Application icon after the driver installed.

本無線網卡運作中, 將於桌面出現以下小圖示, 顯示網卡處於 On-line 狀態
The desktop shows "On-line" icon when the Wireless LAN Card connect to a USB port.



移除網卡, 桌面出現的小圖示, 顯示網卡處於 Off-line 狀態
The desktop shows "Off-line" icon, once the Wireless LAN Card removed.



Fly High
USB2.0 強效 / 遠距無線網卡
USB2.0 High Power Wireless LAN Card

Model No. : TG-USB-OMNI
System requirement : Windows 2000 / XP