

C.CRANE

CC Witness

Do-It-Yourself Battery Replacement Guide

Replacing the lithium-ion battery in the CC Witness is a moderately technical process. If you are unsure of your ability to replace the battery yourself, contact C. Crane for assistance by calling 800-522-8863. A replacement battery can be ordered from C. Crane for \$14.95, or C. Crane will replace the battery for you at \$34.95 (includes return shipping).

WARNING: REPAIR AT YOUR OWN RISK. ANY DAMAGE INCURRED TO THE CC WITNESS WILL NOT BE COVERED UNDER WARRANTY.

Tools Needed:

- Small phillips head screw driver
- Needle-nose pliers
- Flat metal tool with smooth edges (like a butter knife)
- Soft cloth

Please read instructions carefully and follow each step in order until completion.

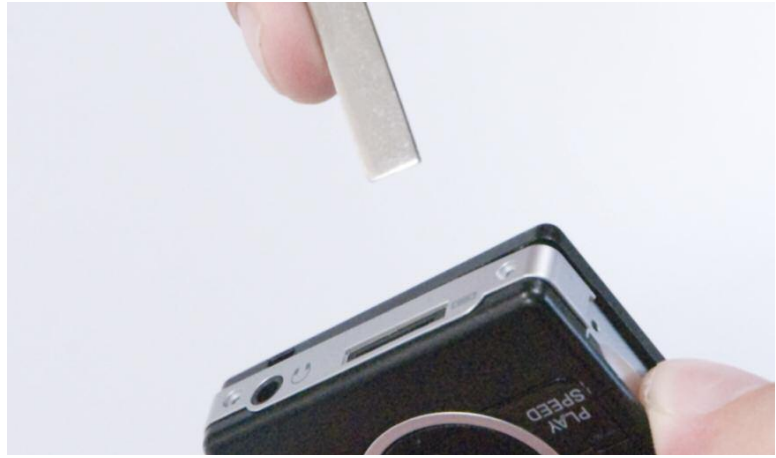
1. Using the small phillips-head screw driver, remove the two screws from the bottom of the CC Witness. Take care not to lose the screws.



2. Open the cover to the SD Card slot and, using both thumbs, separate the case by 1/8 inch.



3. Insert a flat metal tool with smooth edges (like a butter knife) 1/16 inch into the separation.



4. Slide the tool around to the bottom of the CC Witness, while keeping the tool 1/16 inch into the separation. Continue this same technique while rounding all the edges of the case.



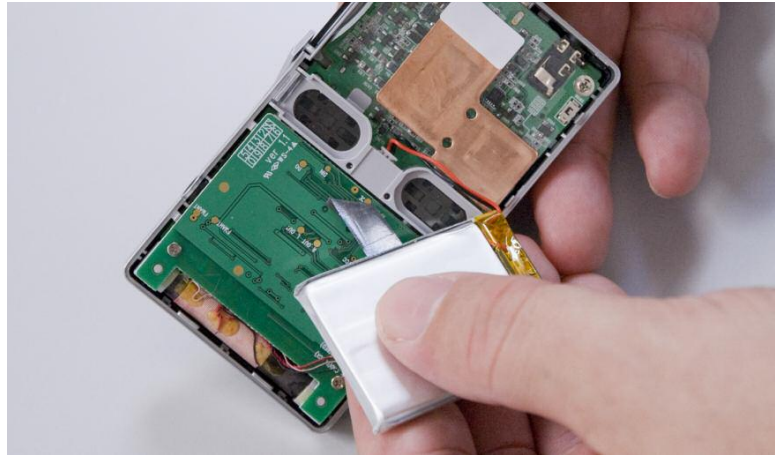
5. You should hear a little “pop” as the tool passes by each snap.



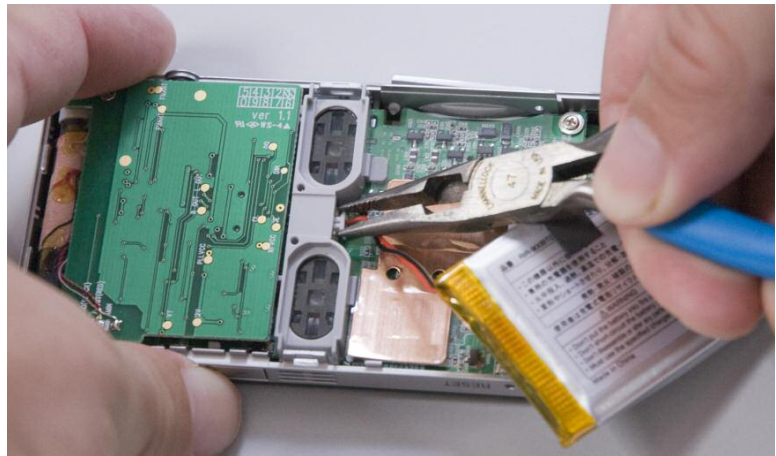
6. Remove the back cover once it is fully unsnapped.



7. Remove the old battery, along with the tape.



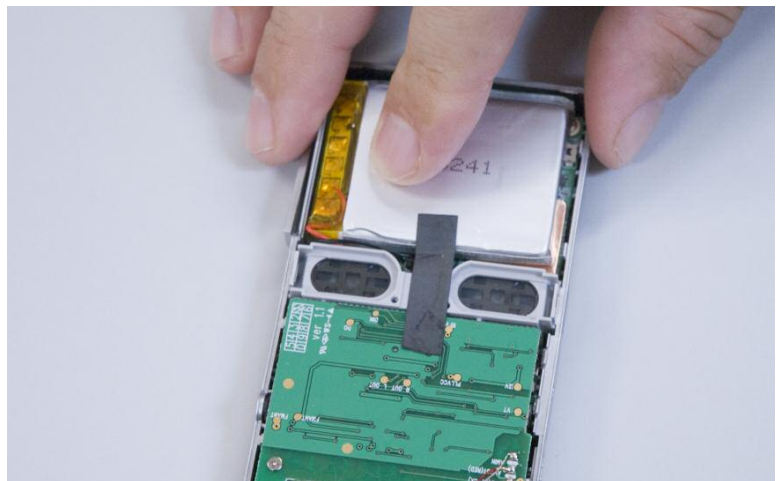
8. Before laying the CC Witness face down on a surface, first lay down a soft cloth to avoid potential damage to the display screen. Using a pair of needle nose pliers, remove the connector by gently pulling it towards the bottom of the case. Be careful not to put extreme pressure on the plastic connector with the pliers or you may damage it.



9. Insert the new battery in the same fashion. Be sure that when reinserting the new battery connector that the red wire is positioned on the right, as shown in the picture. Inserting the connector should not require a great amount of force.



10. Arrange the excess wire between the battery and the gray speaker wall as shown in the picture at right. Reapply the tape to the battery and position the back cover correctly over the front cover. Be sure the both are aligned properly.



11. Using both hands, gently apply pressure to the back cover until the case is fully clipped together.



12. Reinsert the two screws ... and you're done!



C.CRANE

ccrane.com/witness

800-522-8863