

C.CRANE

CC Witness

Firmware Installation Guide

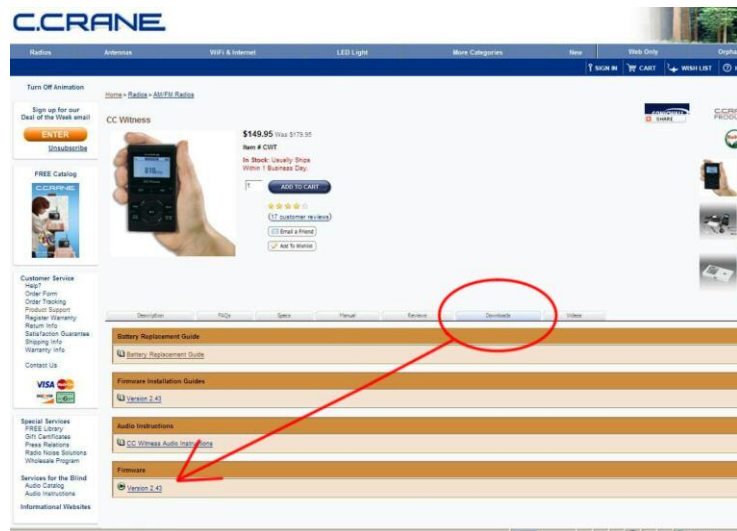
December 1, 2011

NOTE: The internal memory of the CC Witness will be automatically erased when the firmware upgrade is complete. If there are files that you want to keep, please copy them to your computer or an SD card before upgrading.

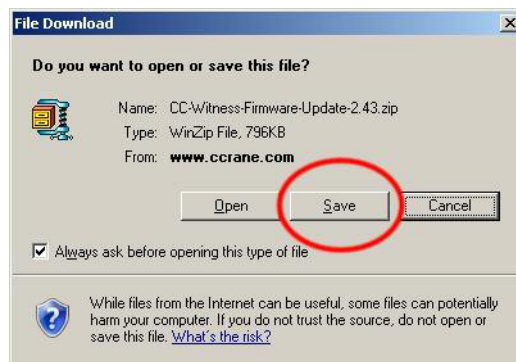
Remove the optional SD card from the CC Witness before upgrading your firmware, otherwise it will be erased.

Although this guide displays screens from a Windows PC, Mac users can follow the guide and upgrade in a similar fashion.

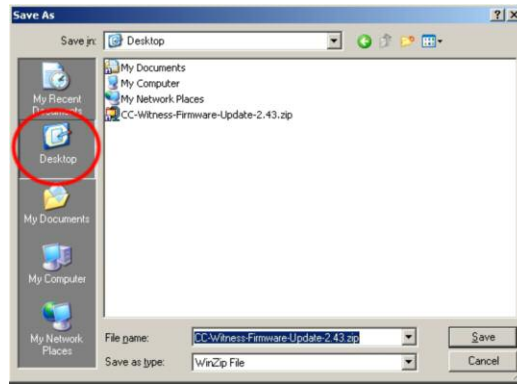
1. Download the new firmware for the CC Witness by clicking “Firmware Ver. 2.43” from the C. Crane website.



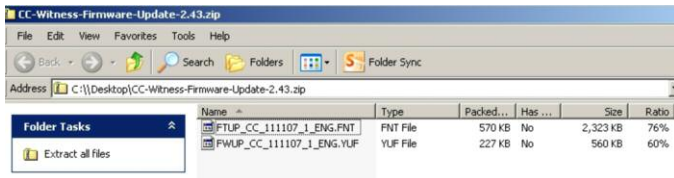
2. Click “Save”.



3. Save to "Desktop".



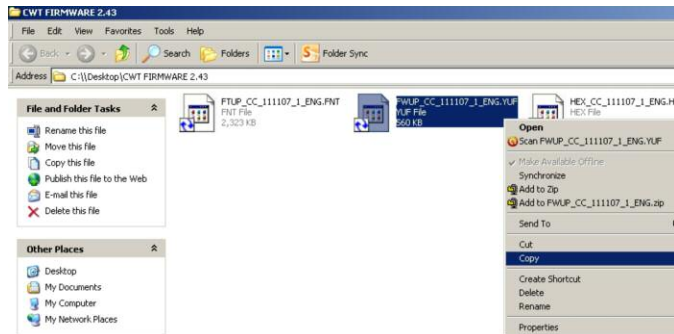
4. When download is finished, you will see a new icon on your computer desktop. Double click on the new icon to open the file.



Note: Your computer cannot open and install the files automatically to the CC Witness. These two firmware files work only on the CC Witness by following the instructions below.

5. Right click on the file that starts with "FWUP..." and select "Copy".

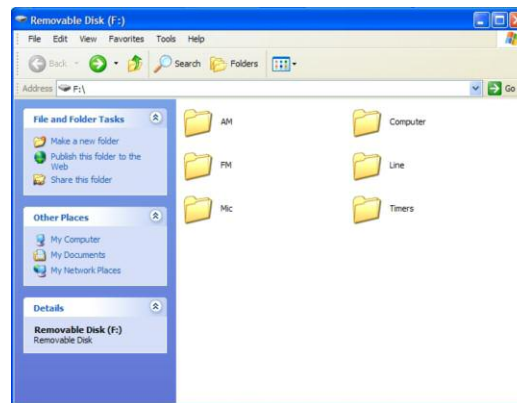
Note: Do not close this window because you will need to use it again later.



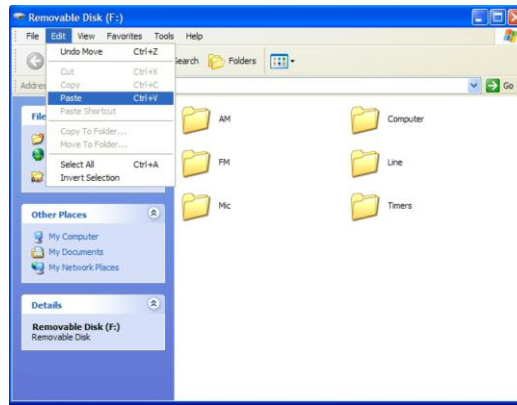
6. Plug the CC Witness in to your computer.

7. Open the internal memory of the CC Witness.

Note: You will be prompted to open the internal memory upon plugging in the CC Witness. The internal memory of the CC Witness will also be represented by a drive letter when "My Computer" is opened.



- Click “Edit” or “Organize” at the top of the screen and select “Paste” to copy the “FWUP...” file into the CC Witness.



- Once the “FWUP...” file is copied to the CC Witness, remove the USB cable from the Computer.

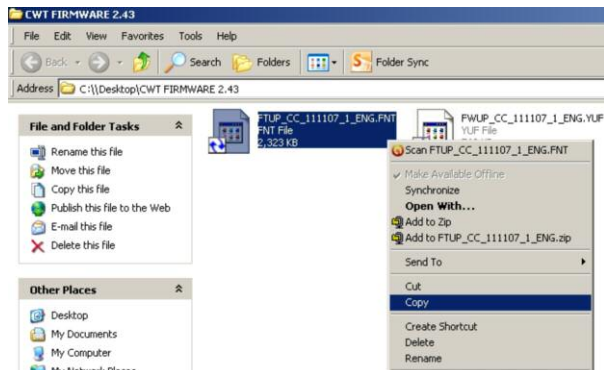
- When detached from the computer, the CC Witness will begin to upgrade the firmware. Wait for both loading screens to finish and the CC Witness to power itself “on” again.



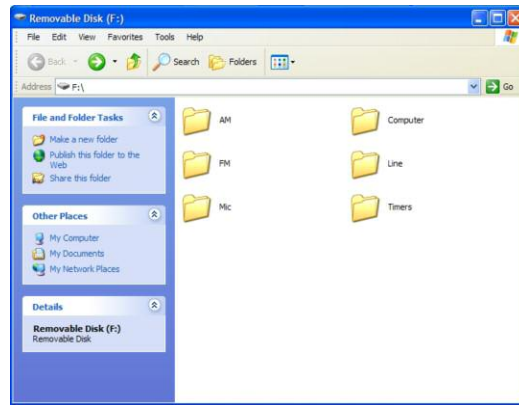
Note: Your firmware update is NOT finished yet!

- Plug the CC Witness back in to your computer.

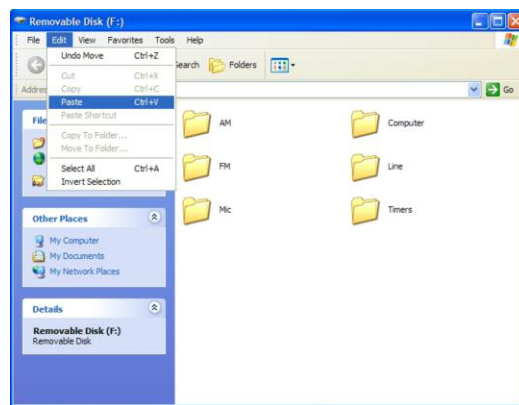
- Bring up the window titled “Firmware 2.43”. Right click on the file that starts with “FTUP...” and select “Copy”.



13. Open the internal memory of the CC Witness.



14. Click "Edit" or "Organize" from the top of the screen and select "Paste" to copy the "FTUP..." file into the CC Witness.



15. Once the "FTUP..." file is copied to the CC Witness, remove the USB cable from the Computer.

16. When detached from the computer, the CC Witness will begin to upgrade the firmware. Wait for the loading screens to finish.



17. When finished, the CC Witness will power up on its own and be ready to use. Notice that the latest version is now displayed.

You can now copy your files back to the CC Witness and insert your optional SD card, if you were using one.

Firmware Release History:

- 1. One Touch Recording (2.32)**
By pressing and holding the RECORD button, you can record for 1, 2, 3 or 4 hours by your choice. This is perfect for talk shows or recording a snippet of internet music.
- 2. Simple and Complex File Name Setting (2.36)**
File names are now simplified by default setting with a shorter name. In the “Settings” menu it is possible to switch to complex file name, which includes more file information.
- 3. SD Card Incompatibility Fix (2.36)**
Some high capacity memory cards will not function with previous versions of firmware. These include some Patriot, PNY, and other brands. The new firmware version 2.36 addresses this problem. We recommend Sandisk brand SD cards for best compatibility. Please let us know if this firmware does not work with your SD card.
- 4. Memory Full Bug Fix (2.36)**
When the RECORD button is pressed, the CC Witness displays “File Index Full” while memory is still remaining. This bug has been fixed.
- 5. Undeleteable Character Files Bug Fix (2.36)**
In the “Mic” and “Line” folders there are other folders that are automatically created named “.. \$” or “* ”. Upon attempting to delete these folders using a computer, an error message is displayed. This bug has been fixed.
- 6. Skipping Sound Bug Fix (2.37)**
When playing back a recording from the CC Witness, a low “skipping” sound can be heard. This bug has been fixed.
- 7. Memory Streamlining (2.4)**
Minor tweaks to how memory is handled by the CC Witness.
- 8. SD Card Compatibility Update (2.43)**
Addresses compatibility issues with SD cards that C. Crane currently offers.

Note: *Firmware updates are compatible with all CC Witness models.*

Please let us know what you think about the new firmware or any other comments by emailing customerservice@ccrane.com

C.CRANE

ccrane.com/witness

800-522-8863

Copyright © 2008-2011 by C. Crane Company, Inc. All rights reserved. No part of this manual may be reproduced, in any form or means whatsoever, without permission in writing from C. Crane Company, Inc.