

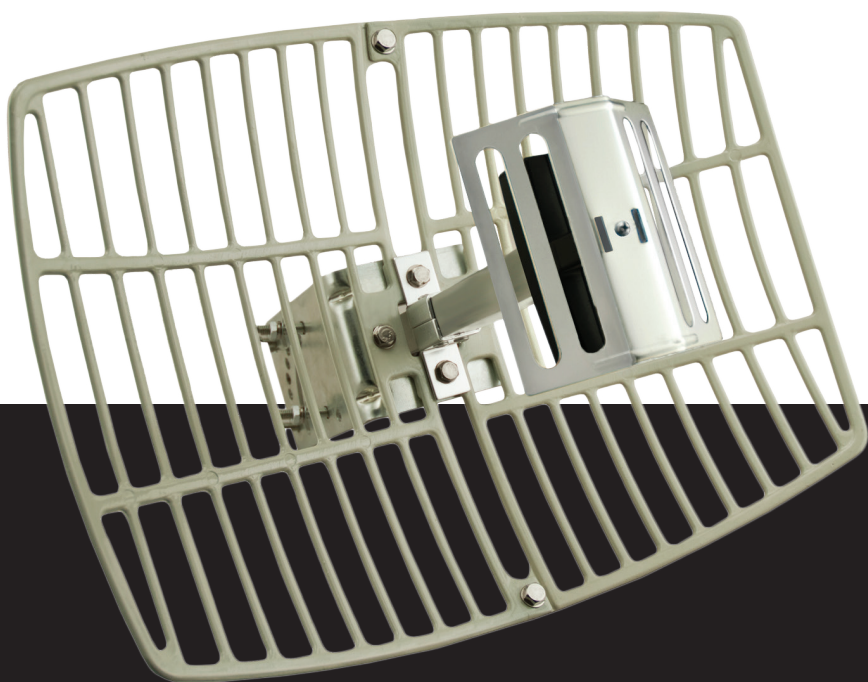
C.CRANE

## Point-to-Point WiFi Antenna

# INSTRUCTION MANUAL

---

Please read all the instructions completely before use  
and save this manual for future reference.



## Safety Instructions

---

### READ BEFORE MOUNTING ANTENNA - SAVE THESE INSTRUCTIONS

1. Read and understand all safety and operating instructions prior to installing the antenna.

**Retain Instructions:** The safety and operating instructions should be retained for future reference.

2. Water and Moisture: Coaxial sealant around openings and connections of device and antenna will prevent damage when used outdoors. Use device in a vertical position.
3. Never use a utility pole to mount the device and antenna or to use as a support. Never climb a utility pole.
4. Antenna installations can be dangerous because many times it involves the use of a ladder and a possible fall. Do Not install antenna on a wet, snowy or windy day or if a thunderstorm is approaching especially when on top of a building or ladder.
5. The antenna can be struck by lightning, which can be fatal. We recommend a licensed and insured installation by a qualified person. If you are unsure of your competency regarding the installation, it is best to seek the help of a qualified professional antenna installer.
6. In the event of storms, disconnect the antenna from your device. This will prevent damage caused by lightning.
7. The installation or dismantling of any antenna near power lines is dangerous. Each year hundreds of people are killed or injured while attempting to install or dismantle an antenna.

## Safety Instructions

---



Please read these IMPORTANT SAFETY INSTRUCTIONS before use. It is important to read and understand all instructions.

### **LIGHTING**

You may need to ground your antenna if you live in an area prone to lightning.

### **POWER LINES**

Never mount an antenna near power lines. If a power line falls and comes in contact with your antenna, **DO NOT TRY TO REMOVE IT**. Call your local power company.

### **WIND**

Installing an antenna on windy days can be dangerous. Slight winds can create strong forces against the antenna equipment.

If you have any doubts about your ability to install your antenna safely, please hire a licensed, bonded professional to do the work.

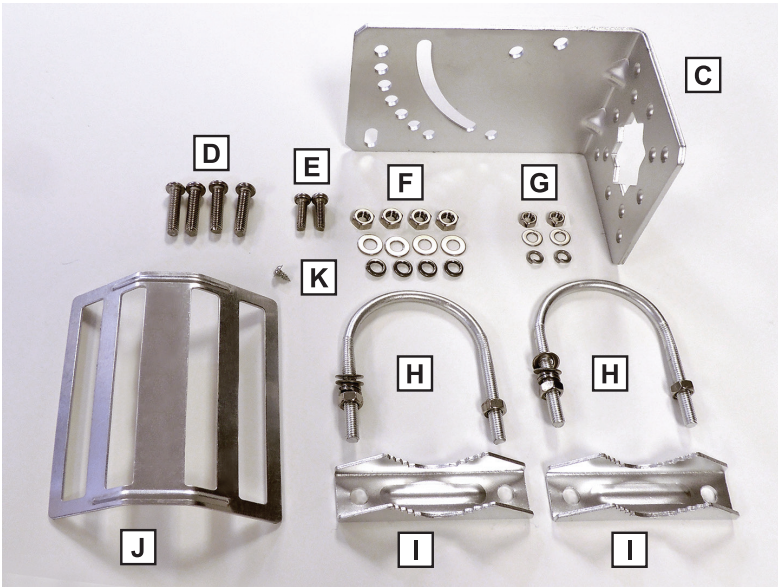
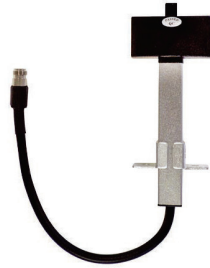
C. Crane is not responsible or liable for damage or injury resulting from antenna installations.

## Part Identification List

**A**



**B**



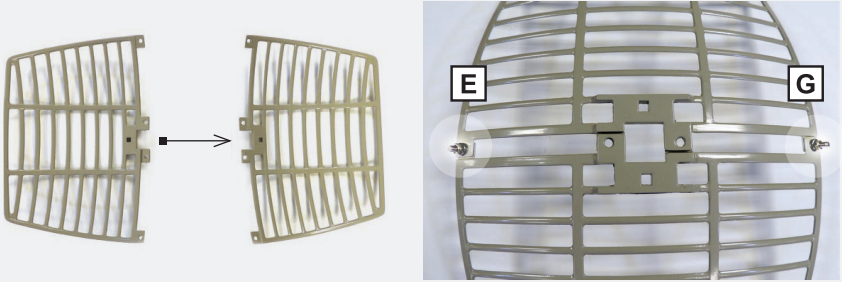
- A.** Grid Reflector
- B.** Feed Horn
- C.** 'L' Bracket
- D.** 4 - Large Screw-bolt
- E.** 2- Small Screw-bolt
- F.** 4- Large nut with flat washer and lock washer
- G.** 2- Small nut with flat washer and lock washer
- H.** 2- U-Bolts with nuts, flat washers, and lock washers
- I.** 2- Pole bracket clamps
- J.** 1- Small Reflector
- K.** 1-Small Reflector screw

## Assembly Guide

---

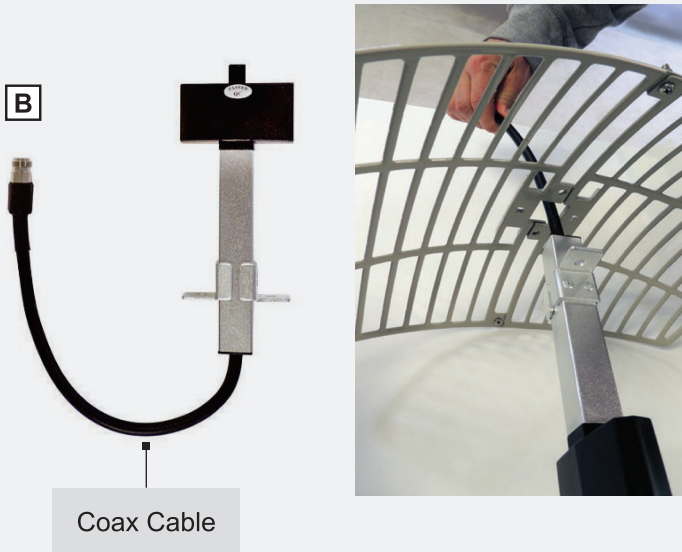
### 1. Assemble Grid Reflector

Fit two halves together and use the (2) small screw-bolts **E**, small nuts with flat, and lock-washers **G** to secure.



### 2. Connect Feed Horn to Grid Reflector

Route coax cable connected to feed horn through front middle square hole, lining-up the round holes on the feed horn and the grid reflector.

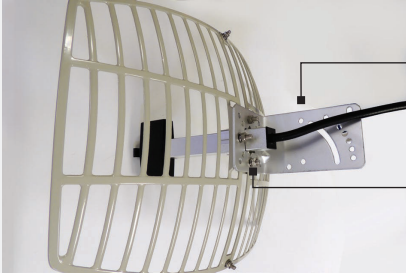


## Assembly Guide

---

### 3. Attach 'L' Bracket, Grid Reflector, and Feed Horn together.

Before inserting screws line up holes for all 3 pieces, connecting all 3 together using the (4) large screw-bolts **D**, large nuts with flat and lock-washers **F**.



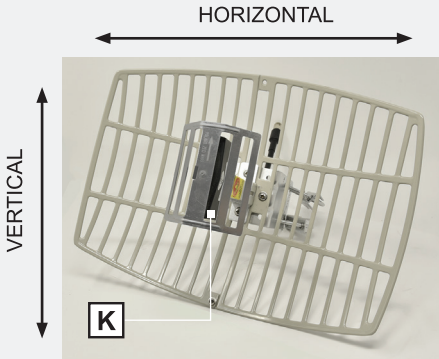
Add Bracket before screws

Large screw-bolts,  
large nuts with flat and  
**lock-washers**

### 4. Attach Small Reflector

(You can remove the plastic film if desired). Align and insert the small screw. (This will only fit one way. Do not overtighten).

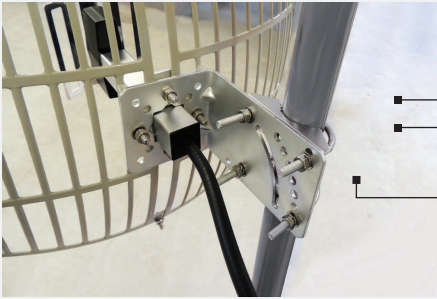
**NOTE:** Please make sure the Feed Horn & Small Reflector are mounted *vertically* on the Grid Reflector.



## Specifications

### 5. Attach Antenna to Pole (Mounting bracket can accommodate 1.25" to 2.2" pole).

- A. Place U-Bolts around pole **[H]**.
- B. Attach Bracket Mounts.
- C. Attach 'L' Bracket **[C]** (Follow picture for flat mounting. For angle mounting use just 1 U-Bolt and indicated holes).
- D. Secure with the washers, lock washers and nuts.

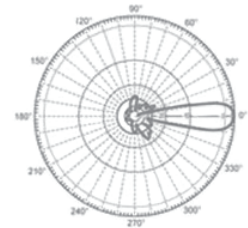


U-Bolt

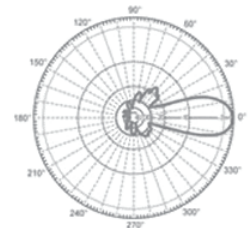
Bracket Mount

Washer (bottom)  
Lock Washer (next)  
Nut (last)

<b>Frequency Range</b>	2400-2485 MHz
<b>Gain (co-polar)</b>	15dBi
<b>H-Plane 3dB Beamwidth</b>	16±1 degree
<b>E-Plane 3dB Beamwidth</b>	21±1 degree
<b>Side Lobe Level</b>	>-15dB
<b>Front-Back Ratio</b>	>20dB
<b>Polarization</b>	Horizontal or Vertical
<b>Cross-Polar Discrimination</b>	>18dB
<b>Impedance</b>	50 Ω
<b>VSWR</b>	< 1.5
<b>Maximum Input Power</b>	100W
<b>Connector</b>	N Female
<b>Dimensions</b>	300mm L x 400mm W
<b>Weight of Antenna</b>	1.5kg
<b>Diameter of Installation Pole</b>	30~50mm
<b>Angle of Pitch</b>	0~40 degree
<b>Rated Wind Speed</b>	140km/h
<b>Warranty</b>	1-Year limited



Horizontal



Vertical

# POINT-TO-POINT WiFi ANTENNA

THIS DEVICE COMPLIES WITH PART 15 OF THE FCC RULES. OPERATION IS SUBJECT TO THE FOLLOWING TWO CONDITIONS:

1. THIS DEVICE MAY NOT CAUSE HARMFUL INTERFERENCE, AND
2. THIS DEVICE MUST ACCEPT ANY INTERFERENCE RECEIVED, INCLUDING INTERFERENCE THAT MAY CAUSE UNDESIRED OPERATION.

**NOTICE:** Any changes or modifications not expressly approved by the party responsible for compliance could void the users authority to operate the equipment.

**C.CRANE**

**172 Main Street**

**Fortuna, CA 95540-1816**

**Phone: 1-800-522-8863 | Web: [ccrane.com](http://ccrane.com)**

Copyright © 2024 C. Crane. All rights reserved. No part of this booklet may be reproduced, in any form or means whatsoever, without permission in writing from C. Crane. (Ver 2)